

## PR647 Chef's 'Essential' Coolchecker® Long Sleeve Shirt

### Description

This long sleeve chef's shirt is made with Premier's Coolchecker® fabric, guaranteeing a moisture wicking and breathable performance. Offering value-for-money this shirt is a great solution for people working in a range of roles in the catering and hospitality industry. Designed with a press-stud fastening neckband and a mandarin collar stand. A covered placket conceals two press stud buttons. To the reverse, there is a press-stud button tab on the neckband to hold an apron in place and a mesh-back panel to allow airflow through the fabric. The left sleeve has a useful pen pocket. Side slits in the hem-line helps give movement through the shirt and provides a pleasing silhouette.

### Product Features:

- Banded neckband with press stud button fastening
- Mandarin collar stand
- Covered placket with press stud fastening
- Pen pocket on left sleeve
- Ribbed-knit cuffs
- Coolchecker® mesh back panel for airflow
- Side slits on the hem-line

### Available In:

XS, S, M, L, XL, 2XL, 3XL, 4XL

### Certifications:



### Colours:

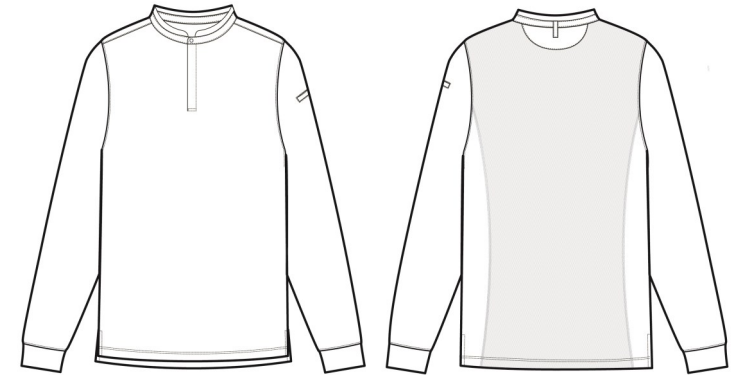
Colour	Pantone	C	M	Y	K
Black	Black c	0	0	0	100
White	White	0	0	0	0

### Fabric:

100% Recycled Polyester,  
155gsm

### Suggested Decoration:

Screen Print, Transfer  
Print, Embroidery



### Country of Origin:

Myanmar

### Commodity Code:

6106200000

### Features:



### Wash Care:



### Carton Information:

Sizes	Carton	Pack	SKU's	Carton Weight	Carton Dimensions
All sizes	36	6	18	10.5kg approx	59cm x 38cm x 22cm

### Garment Sizes:

Size	XS	S	M	L	XL	2XL	3XL	4XL
Chest to fit"	31	33	37	39	41	44	46	48
Chest to fit cm	79	89	94	99	104	112	116	122
Chest actual cm	92	98	104	110	116	122	128	134
Back length cm	67	69	71	73	75	77	79	81