

PR906 Chef's Zip-Close Short Sleeve Jacket

Description

An easy-wearing pull-on chefs jacket with a concealed zip-through fastening. The two denim styles have reverse coloured panels under the arm and down the sides with the White version benefits from an under-arm breathable mesh panel. Styled with a mandarin collar and side vents for a typical style seen in many kitchen environments.

Product Features:

- Double pen pocket on the left sleeve.
- Zip through fastening
- Mandarin collar
- Under arm fabric variances.

Available In:

XS, S, M, L, XL, 2XL

Certifications:



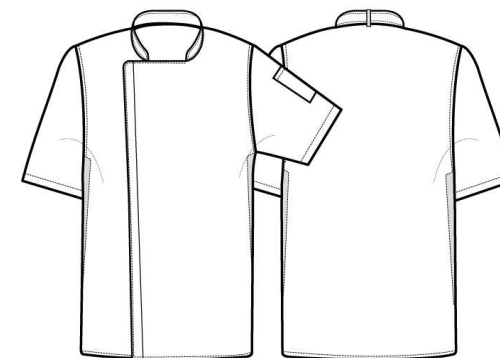
Colours:

Colour	Pantone	C	M	Y	K
Black Denim	426c	94	77	53	94
Indigo Denim	2380c	91	71	36	56
White	White	0	0	0	0

Fabric:

White = 65% Polyester, 35% Cotton Twill, 170gsm.

Denim = 60% Cotton, 40% Polyester Twill, 230gsm.



Suggested Decoration:

Screen Print, Transfer Print, Embroidery

Country of Origin:

Bangladesh

Commodity Code:

White 6211331000

Denim 6211321000

Features:



Wash Care:



Carton Information:

Sizes	Carton	Pack	SKU's	Carton Weight	Carton Dimensions
All Sizes	24	6	18	10kg approx	60cm x 40cm x 20cm

Garment Sizes:

Call size	XS	S	M	L	XL	2XL
Chest to fit"	30	34	38	42	46	50
Chest to fit cm	77	87	96	107	117	126
Chest actual cm	96	104	112	120	128	136
Back length cm	78	78	78	78	78	78