

## PR903 Chef's Long Sleeve Coolchecker® Jacket With Mesh Back Panel

### Description

A long-sleeve chef's jacket constructed with our very own Coolchecker® fabric. The centre back panel is made from the Coolchecker® fabric which offers exceptional moisture management and wicking properties so chef stays fresh and cool during service. A wrap over fastening with ten self-fabric buttons, a mandarin collar and a useful double pen pocket on the left arm.

### Product Features:

- Coolchecker® back panel
- Double pen pocket
- Mandarin collar
- Self-fabric button fastening

### Available In:

XS, S, M, L, XL, 2XL

### Certifications:

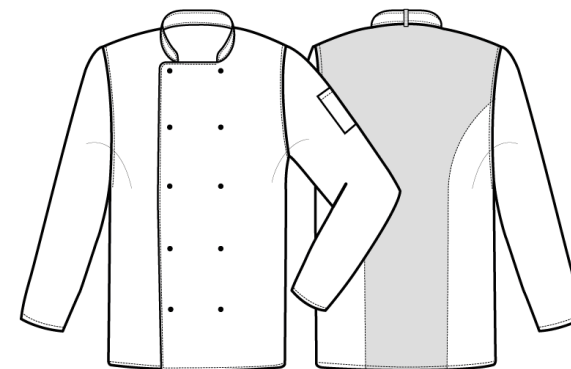


### Colours:

Colour	Pantone	C	M	Y	K
Black	Black c	0	0	0	100
White	White	0	0	0	0

### Fabric:

65% Polyester, 35% Cotton Twill, 170gsm.



### Suggested Decoration:

Screen Print, Transfer Print, Embroidery

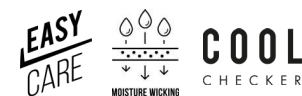
### Country of Origin:

Bangladesh

### Commodity Code:

6211331000

### Features:



### Wash Care:



### Carton Information:

Sizes	Carton	Pack	SKU's	Carton Weight	Carton Dimensions
All Sizes	24	6	12	10kg approx	60cm x 40cm x 20cm

### Garment Sizes:

Call size	XS	S	M	L	XL	2XL
Chest to fit"	30	34	38	42	46	50
Chest to fit cm	77	87	96	107	117	126
Chest actual cm	96	104	112	120	128	136
Back length cm	76	76	76	76	76	76